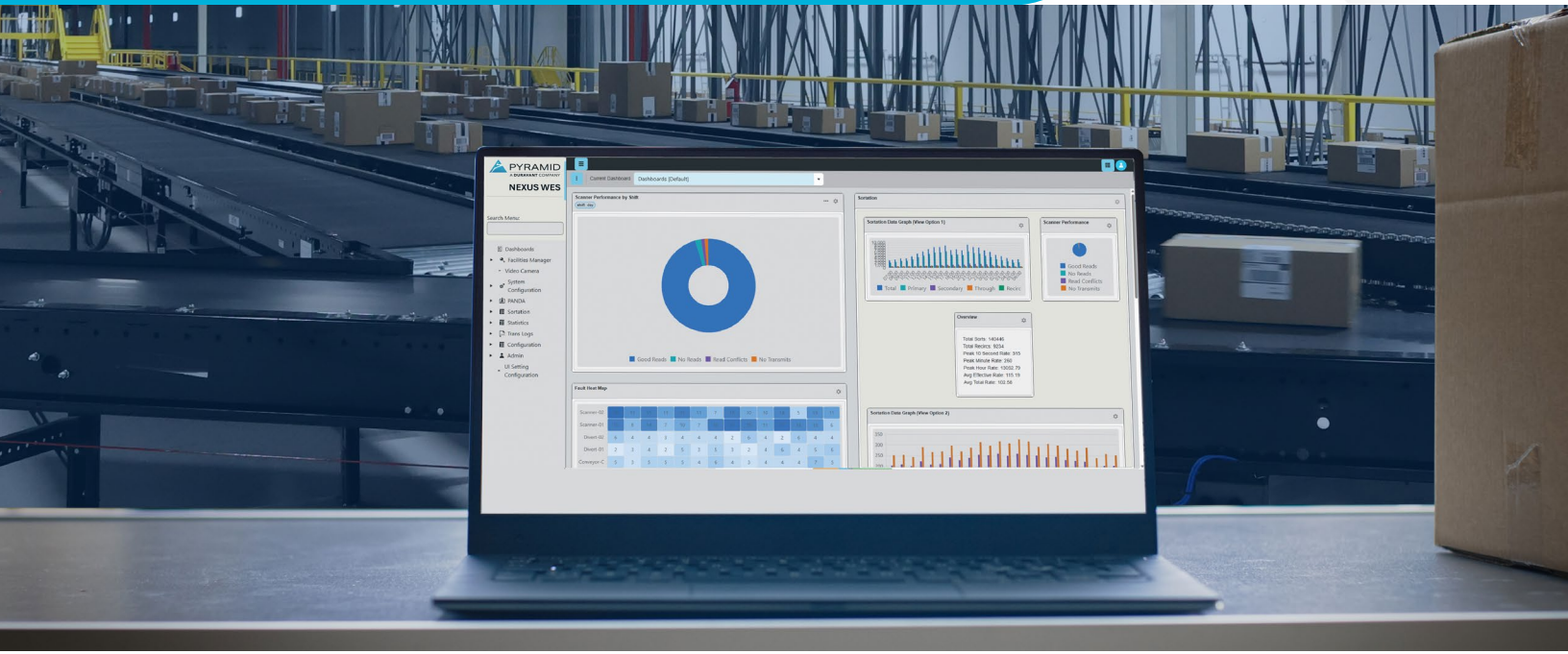


# NEXUS WES



## NEXUS Warehouse Execution System (WES)

NEXUS is a next-generation Warehouse Execution System designed to serve as the centralized intelligence layer of modern distribution and operations. Built on decades of automation expertise, NEXUS orchestrates people, processes, and automation in real time, bridging the gap between Warehouse Management Systems (WMS), Warehouse Control Systems (WCS), ERP platforms, and material handling technologies.

NEXUS dynamically prioritizes, releases, and manages work across picking, replenishment, putaway, packing, and sorting operations. Continuous decision-making ensures orders are executed based on real-time conditions such as service level agreements (SLAs), labor availability, equipment status, and downstream capacity, eliminating bottlenecks and maximizing throughput.

Integrating with AS/RS, Goods-to-Person systems, AMRs, robotics, conveyors, and manual operations alike, NEXUS has a flexible architecture that supports a wide range of picking methods and fulfillment strategies, allowing operations to adapt quickly to changing demand, order profiles, and growth.

### Core Capabilities

- ▶ Dynamic Order Management
- ▶ Advanced Task Management
- ▶ Diverse Picking Support

### Inventory Management

- ▶ Real-Time Inventory Synchronization
- ▶ Allocation & Replenishment
- ▶ Cycle Count Management



**PYRAMID**

A DURAVANT COMPANY

# NEXUS WES

## Automation & Integration

### Integrates Seamlessly With

- ▶ AS/RS systems
- ▶ Goods-to-Person solutions
- ▶ AMRs and AGVs
- ▶ Conveyors and sortation systems
- ▶ Robotics
- ▶ Barcode scanners
- ▶ Third-party slotting software

### Intelligent Resource Allocation

- ▶ Real-time equipment utilization management
- ▶ Dynamic MHE allocation based on availability and capacity
- ▶ Reduced idle time and maximized productivity

### Real-Time Visibility & Analytics

- ▶ Live operational dashboards
- ▶ KPI monitoring (order processing time, inventory accuracy, labor productivity, equipment utilization)
- ▶ Multi-site visibility and performance comparison
- ▶ Bottleneck and inefficiency identification

## Key Benefits

- ▶ Increased throughput and pick efficiency
- ▶ Improved order accuracy
- ▶ Reduced bottlenecks and downtime
- ▶ Optimized labor and equipment utilization
- ▶ Scalable and future-ready architecture
- ▶ Equipment-agnostic flexibility

## Why NEXUS?

Designed for retail replenishment, ecommerce fulfillment, omnichannel distribution, and complex automated environments, NEXUS empowers operations to adapt, scale, and perform at peak efficiency.

With advanced task management, intelligent resource allocation, and real-time visibility into KPIs, NEXUS empowers operators and leaders with actionable insights to improve labor productivity, order accuracy, and system performance. Scalable by design and backed by continuous support, NEXUS future-proofs warehouse operations while delivering measurable efficiency gains today.

NEXUS, intelligent execution for agile, automated warehouses.



The screenshot displays the 'Equipment Monitor' interface within the NEXUS WES software. It features a sidebar with navigation options like 'Dashboards', 'Facilities Manager', and 'Equipment Monitor'. The main area shows a table of equipment faults with columns for Equipment Name, Fault Type, Area, Active status, Status, Comment, and Last Occurrence. The table lists various faults such as 'Panda', 'Anti-Looplock Mode', 'Tracking', 'Dimensioner', 'Energy Management', 'Node', 'Message', 'Power Loss/Off', 'Device Net', 'Running', 'Slow Rate', 'Disabled', 'Halt', 'Power Loss/Off', 'Hull Full', and 'Misc Error'.

Equipment Name	Fault Type	Area	Active	Status	Comment	Last Occurrence
WFD-1-21214	Panda	Shipping	Active	Fault		11/1/2025 8:32
CONV-1904	Anti-Looplock Mode	Shipping	Active	Fault		11/1/2025 7:56
PE-1-40527	Tracking	Shipping	Active	Fault		11/1/2025 6:22
PE-1-90123	Dimensioner	Shipping	Active	Disable		11/1/2025 4:41
WFD-1-21214	Energy Management	Shipping	Active	Disable		11/1/2025 3:49
PE-1-40312	Node	Shipping	Active	Fault		11/1/2025 3:38
DCM-1-32005	Message	Shipping	Active	Fault		11/1/2025 3:18
CONV-1304	Power Loss/Off	Shipping	Active	Fault		11/1/2025 2:20
PE-1-40516	Device Net	Shipping	Active	Fault		11/1/2025 2:10
CONV-1033	Running	Shipping	Active	Warning		10/31/2025 7:44
ESPC-1-30205	Slow Rate	Shipping	Active	Warning		10/31/2025 7:40
CONV-1019	Disabled	Shipping	Active	Warning		10/31/2025 6:23
PE-1-40524	Halt	Shipping	Active	Fault		10/31/2025 6:17
CONV-1264	Power Loss/Off	Shipping	Active	Fault		10/31/2025 6:08
CONV-1906	Hull Full	Shipping	Active	Hull Full		10/31/2025 6:04
CONV-1266	Misc Error	Shipping	Active	Fault		10/31/2025 4:42

## Let's talk about your application.

**PYRAMID, a Duravant Company**

10200 Alliance Road, Suite 100  
Cincinnati, OH 45242  
Tel: 513.679.7400  
info@pyramidsoftware.com  
pyramidsoftware.com

